

1955

BRAMBLES

HOLIDAY

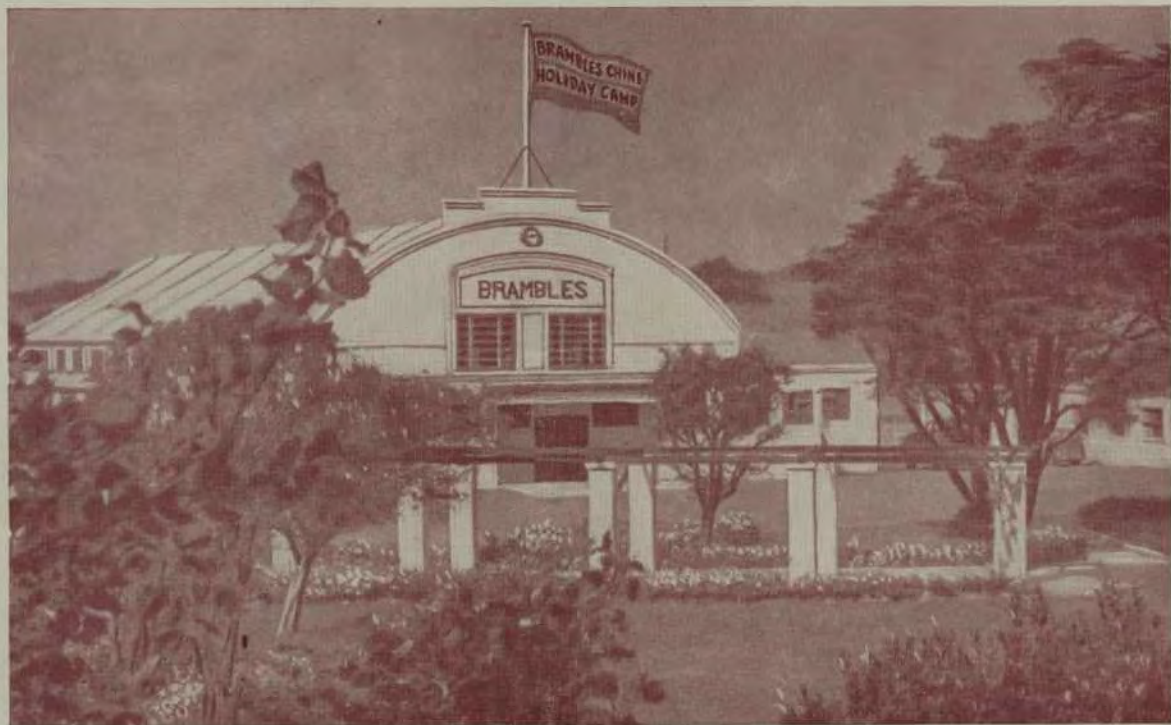
CAMP



Isle of Wight

An ideal holiday on a lovely Island!

RAY'S SHED



Whatever the weather there is never a dull moment in our GRAND PAVILION.

RAY'S SHED

BRAMBLES Chine Holiday Camp, Ltd.

(G. A. Preece and J. Starke)

Under the personal
supervision of
Mr. & Mrs. G. A. Preece.

FRESHWATER, Isle of Wight.

(Established 1935).

Telephones—
Office: Freshwater 217
Guests: Freshwater 245

Dear Camper,

We have pleasure in forwarding you our Brochure for the 1955 season.

We think you will find all the information you need in this, but should there be any other particulars you require we shall be pleased to furnish same on hearing from you.

Among the many attractive features of "Brambles," we provide a first class Resident Band, which supplies the latest music for dancing every night throughout the season in our main Pavilion, the Ballroom of which is equipped with the finest possible Maple Floor.

Without fear of contradiction, we confidently state that our own private Beach is the safest Bathing Beach (at all Tides) on the South Coast.

We sincerely hope to have the pleasure of your company, and assure you of a happy and healthy holiday.

**P.S.—EARLY BOOKING IS ESSENTIAL
TO AVOID DISAPPOINTMENT.**

Bookings commence Jan. 1st each year.

Yours faithfully,

G. A. PREECE,



G. A. PREECE



J. STARKE

The Camp with the Personal Touch!

RAY'S SHEU

BRAMBLES
BATHING
BEACH.



Photograph by E. A. Sweetman, Ltd.

You'll have a Whale of a time!

RAY'S SHED

This Badge guarantees good catering, good sanitation, and good sleeping accommodation; also the proper conduct of the



camp in accordance with the very high standards laid down by the National Federation of Permanent Holiday Camps.

This Camp is a Founder Member.

"THE SIGN OF A GOOD CAMP."

"To have camped together is an everlasting bond of friendship."

Camp Life on the edge of the Ocean.

BRAMBLES CHINE HOLIDAY CAMP is situated at Brambles Chine (Freshwater), in beautiful Colwell Bay, the peaceful cove which is noted for its generous sweep of golden sands, so perfect for family parties. From Chalet to beach—a few seconds.

It is also surrounded by glorious scenery and adjoins Totland Bay, Alum Bay, The Needles, Tennyson Downs, and many other places of scenic beauty. For those who enjoy rambling, the beautiful Garden Isle, bordered with varying Coloured Cliffs and Sands, gives untold wondrous pleasure.

ACCOMMODATION is limited to 500 visitors, thus assuring everyone of excellent sociability. Facilities for Children include Swings, See-Saws, and Slide, and there is a Play Room for wet weather.

It is impossible to do more than hint at the wealth of panorama and delights which abound in this enchanting Island. The facilities for visiting the places of interest leave nothing to be desired. Organised trips give unlimited opportunities, and as varied as one could wish.

All visitors to Brambles can rely on courteous attention and a sincere desire on our part to make their stay as enjoyable and beneficial as possible.

WE CLAIM TO HAVE THE FINEST POSITION AND MOST BEAUTIFUL SURROUNDINGS OF ANY CAMP IN THIS COUNTRY

*Never a dull moment!
— But you may do this if you wish —*



RAY'S SHEU

Dancing
to
the
music
of
our
Resident
Band



BRAMBLES BALLROOM.

Brambles Pavilion incorporates under one roof, Ballroom (Maple Floor), Spacious Games Room, Billiards Rooms, Social Club Bar, Snack Bar, and includes facilities for Skating and Film Shows.

RAY'S SWED

The Joys of Camp Life.

Camp Life is something different from the ordinary Boarding House or Hotel life. While it has the advantages of both it has that added sense of freedom which, in the twentieth century days, is very difficult to obtain. Outdoor life at a Camp after the noisy streets of town life soon brings the colour back to the cheek, and the spontaneous friendship of other campers quickly helps one to think that life, after all, is worth living.

Never a Dull Moment.

Sport of all descriptions can be indulged in—Four Hard Tennis Courts, Putting, Bowls, Cricket, Bathing, Billiards (full-size tables), Snooker, Table Tennis, Film Shows, Rambling, Coach Tours, Motor Boat and Steamer Cruises, Dancing, Concerts, Whist Drives—all are provided for, under the direction of our Social Organisers (please note that Tennis Rackets are not supplied). The carefree outdoor life at Brambles immediately helps to bring a healthy tiredness, but even here the camper is again provided for by comfortable chalets. Noise in the chalet squares is not allowed after activities have ceased in the ballroom.

Brambles Social Club.

All guests (over the age of 18) are invited to become Temporary Members of Brambles Social Club for the period of their holiday. This allows them to make use of the Licensed Club Bar adjoining the Ballroom. Membership fee is allowed for in the weekly charges.

Snack Bar in the main Pavilion, for light refreshments, minerals, ices, etc., at moderate charges.

Camp Shop where you may purchase Postcards, Toilet Goods, Gifts, Cigarettes, Books, Papers, Sweets, etc. A Ladies' Hairdressing Salon is situated in the Camp.

Grand Concert every Sunday Evening.

An excellent array of artistes has been engaged to perform throughout the Season. Also Campers' own Concert during the week, so please bring your music, etc., if you wish to take part.

Riding. The Brambles Riding Establishment offers good hacks and children's ponies, with tuition for beginners.

Roller Skating. Expert Instructor. Skates provided.

"Bring your own Instruments etc."



*Brambles
Chine
Holiday
Camp*



Photography by—

Panoramic P



*Freshwater,
Isle
of
Wight*

View of Chalets.

—E. A. Sweetman, Ltd., Tunbridge Wells.





Everything goes with a Swing —

RAY'S SHED



— at Brambles Grove!
RAY'S SHED

Rambles within easy walking distance —



TOTLAND BAY
which adjoins Colwell Bay.

— but you won't find it easy

RAY'S SHED



The Needles.



Stag Rock—Freshwater Bay.



Alum Bay—The Coloured Cliffs.



Tennyson Down.

to tear yourself away from Brambles



Coach Tours from Brambles

During the season numerous coach tours are arranged for visits to many places of interest in the Island, including the famous beauty spot Blackgang Chine, Carisbrooke Castle, Osborne House, Shanklin, Sandown, Ventnor, etc. All the above tours have proved most popular in the past.



SHANKLIN—The Old Village.



CARISBROOKE CASTLE

Chalets. Cozy Chalets with electric light have beds with spring interior mattresses, feather pillows, blankets, sheets, dressing chest, mirror, and liberal supply of hooks. All Chalets have fitted basins and cold running water. Hot water points are situated at convenient positions in each square. CHALETS accommodate one, two, or three adults (all single divan beds), or four adults in Chalet with two 2-tier bunks. FAMILY CHALETS to accommodate two adults and one child are fitted with two single beds and cot, or three single beds according to age of child. FAMILY CHALETS to accommodate two adults with two children are fitted with two single beds (or one double bed), and a 2-tier bunk, or one single bed, a 2-tier bunk and cot. Also limited accommodation in the GUEST HOUSE—ideal for families. Single rooms, and rooms with one double and one single bed (Cot can be added if required). Hotel comfort including hot and cold running water. PLEASE STATE THE TYPE OF ACCOMMODATION DESIRED WHEN MAKING YOUR APPLICATION. All Chalets are serviced daily; guests have only to bring their own towels, soap, and boot brushes. Parents are requested to bring their own mackintosh sheets.

Catering. Catering, prepared by qualified chefs, under the personal supervision of Mrs. Preece, in modern, up-to-date kitchens, with latest equipment. The menu is varied each day to suit all tastes. Four meals are provided at the following times: Breakfast, 9 a.m.; Lunch, 1 p.m.; Tea, 4 p.m.; and Dinner, 6.30 p.m. Special Meal for Children who go to bed before Dinner.

The Camp opens on Saturday May 21st and closes on September 24th, 1955.

Bookings are from Saturday to Saturday AFTER LUNCH ONLY.

Snack bar service is available for Campers who find it necessary to arrive before lunch. Lunch is available for all Campers on the day of departure. (We regret that packed lunches cannot be provided).

	Weekly charges inclusive of all meals.			
	Adults	8 and under 12	Children 2 and under 8	Children under 2 years
MAY 21st to JUNE 4th ..	£6 15s. 0d.	£4 10s. 0d.	£3 5s. 0d.	£1 15s. 0d.
JUNE 4th to JULY 9th ..	£7 15s. 0d.	£5 10s. 0d.	£4 0s. 0d.	£2 5s. 0d.
JULY 9th to AUGUST 27th ..	£8 15s. 0d.	£6 10s. 0d.	£4 15s. 0d.	£2 15s. 0d.
AUGUST 27th to SEPT. 10th ..	£7 15s. 0d.	£5 10s. 0d.	£4 0s. 0d.	£2 5s. 0d.
SEPT. 10th to SEPT. 24th ..	£6 15s. 0d.	£4 10s. 0d.	£3 5s. 0d.	£1 15s. 0d.

Children of 12 and over, Adult rate.

Additional charge for GUEST HOUSE accommodation, 10/- each adult and 5/- each child per week. Club membership is allowed for in the above charges. All sports and amusements are free, and no collection is taken for prizes.

Note: The special prices for children apply only when accommodated in Family Chalet with TWO adults. Children occupying adult space are charged at adult rate. A deposit of two pounds each person is required. (See booking form).

We regret that Dogs cannot be allowed in the Camp.



HAYSSHEG

How to Reach **BRAMBLES**

Via Lymington-Yarmouth.

Lymington Pier is easily reached from all Main Line Railways, and steamer covers short distance between Lymington and Yarmouth. From there, West Wight Bus Co.'s Coaches will bring you to Camp at 2/6 return. Children half price. All connections met.

We strongly advise travel by this Route wherever possible.

Car Ferry

via Lymington and Yarmouth, Portsmouth and Fishbourne (near Ryde), and Southampton and Cowes. Space should be booked well in advance as the Ferries are in great demand during the Season. Applications to British Railways, Lymington Pier, Hants, Phone Lymington 3301; British Railways, Broad Street, Portsmouth, Phone Portsmouth 4655; Red Funnel Steamers, Phone Southampton 2042. A large open-air Car Park is available at BRAMBLES free of charge. Limited accommodation under cover at 5/- per week. Reservation must be made in advance.



Luggage may be sent in advance. Particulars from any Railway Station.

**BOOK YOUR COACH SEATS WHEN YOU
MAKE YOUR BOOKING.**

L.W. County Press—1468/54

RAY'S SHED